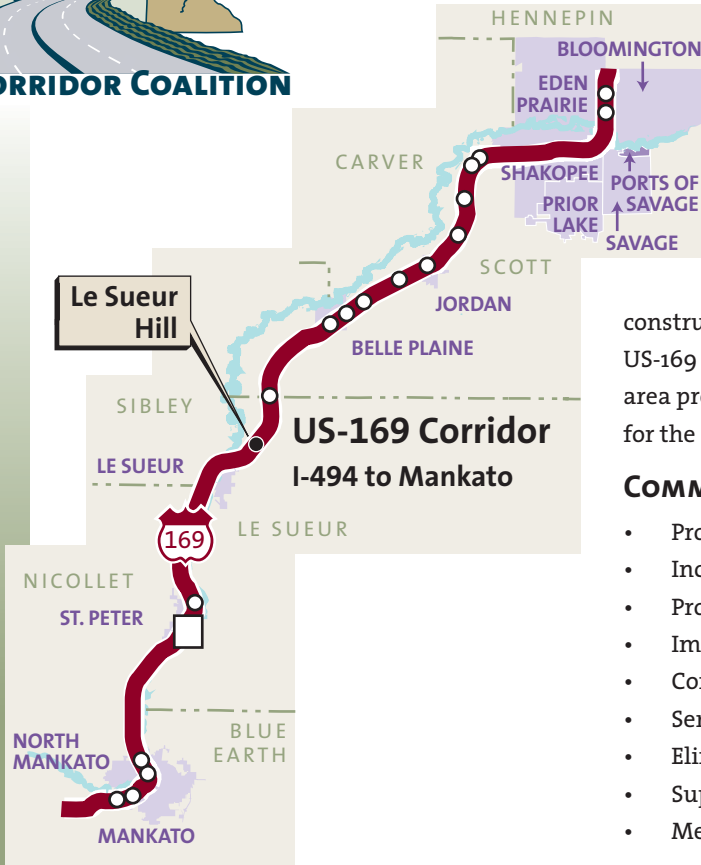




LE SUEUR HILL INTERCHANGE

PROVIDING ACCESS TO A LARGE GROWTH AREA OF THE CITY



The City of Le Sueur has recently run out of developable industrial land and has been planning for growth north of the city to occur as demanded. The *IRC Management Study* completed in 2000 identified the need for an interchange at CSAH-28 and US-169; subsequent studies continued planning for that need.

The City has annexed land and has spent nearly \$5 million bringing utilities to this area. This project would construct a new interchange at US-169 and CSAH-28, in support of the US-169 Le Sueur Hilltop Business Park. Grade separated access to this area provides a clean slate for industrial and commercial development for the City of Le Sueur over the next 50+ years.

COMMUNITY BENEFITS

- Promotes economic development.
- Increases employment.
- Promotes safety.
- Implements access management.
- Connects the community.
- Serves multi-modal traffic.
- Eliminates the potential signalization of CSAH-28.
- Supports the mobility goal on the US-169 corridor.
- Meets the needs of the corridor for the next 50+ years.

FUNDING

Together with its area partners, the City of Le Sueur, along with Le Sueur County, MnDOT District 7 and the US-169 Corridor Coalition, request funding to construct this new interchange. The project partners have developed an interchange configuration with bridge and ramp geometrics that have minimal cost, meet design criteria and will adequately serve future development. Further study of the interchange is underway. An environmental assessment and preliminary design will begin in the summer of 2009.

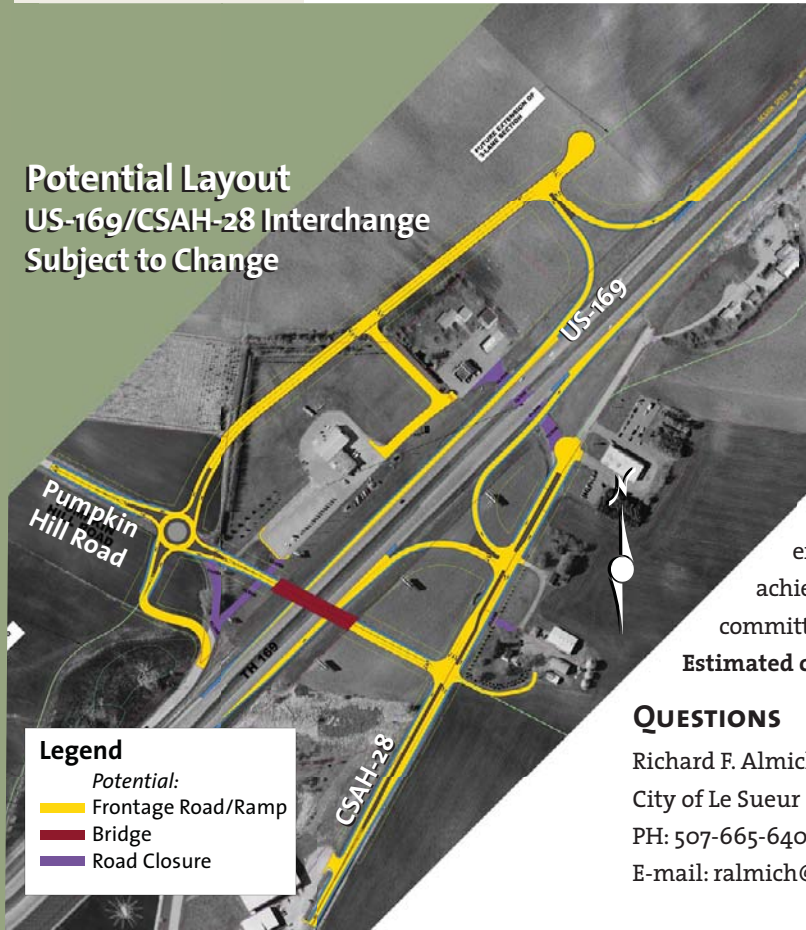
To date, over \$4,775,000 has been invested locally in this area. Improvements primarily include utility extensions. With additional funding the project is achievable. Local jurisdictions and partnerships are committed to seeking funds for construction.

Estimated cost: **\$ 9.6 million (2011 dollars)**

QUESTIONS

Richard F. Almich, City Administrator
 City of Le Sueur
 PH: 507-665-6401, ext. 13
 E-mail: ralmich@cityoflesueur.com

Potential Layout
 US-169/CSAH-28 Interchange
 Subject to Change



Legend

Potential:

- Yellow line: Frontage Road/Ramp
- Red line: Bridge
- Purple line: Road Closure