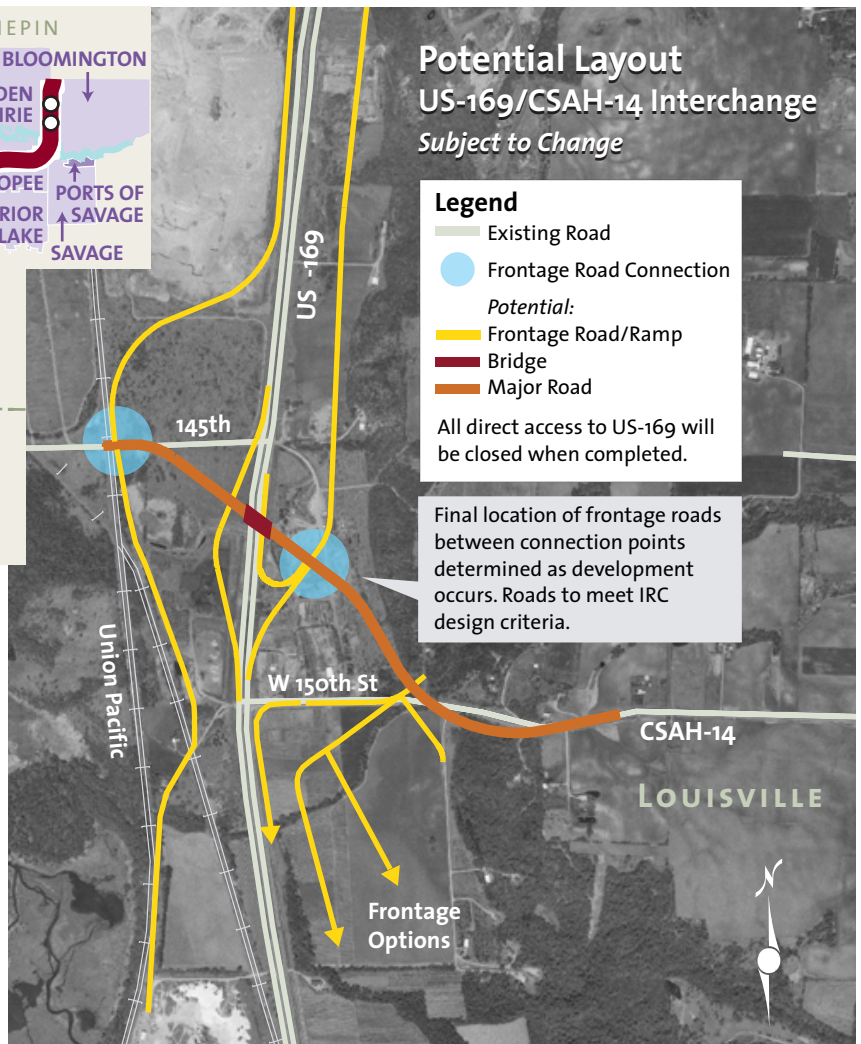
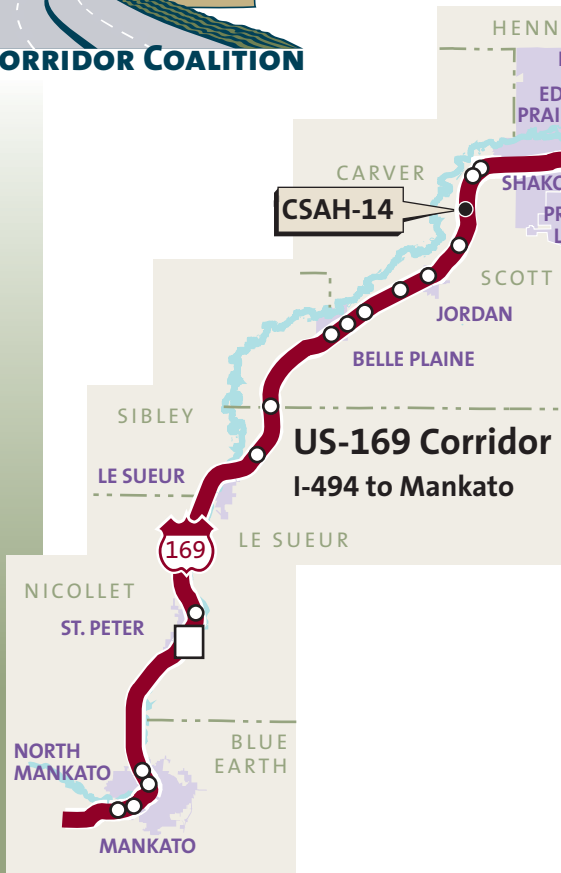




CSAH-14 INTERCHANGE

FUNDING AND DESIGN NEEDED TO IMPROVE SAFETY AND TH-169 MOBILITY



A 2003 study completed by the Minnesota Department of Transportation Metro District, Scott County and Louisville Township established a frontage road plan, interchange concept, right-of-way footprint and environmental scan for the US-169 and CSAH-14 interchange. The *Interregional Corridor Study* identified this intersection as a potential interchange location. An additional study has been completed to assist in the preservation of right-of-way in the interchange footprint area.

Scott County and Louisville Township are using the footprint for planning requests and incorporating the study into the *Scott County 2030 Comprehensive Plan*. The right-of-way footprint does not allow development to infringe on the interchange area which will help reduce costs but allow approved, compatible development to take place.

COMMUNITY BENEFITS

- Improve safety by removing at-grade intersections.
- Enhance interconnectivity between eastern Scott County and US-169.

- Support the mobility goal on the US-169 Corridor.
- Allow for approved compatible development to continue with an identified footprint in place.

FUNDING

Preliminary design and environmental work are still needed. The estimated cost of the entire project is \$31 million, which is a 2008 estimate based on 5 percent per year inflation of a 2002 estimate.

QUESTIONS

Lisa Freese
 Scott County Public Works
 PH: 952-496-8363
 E-mail: lfreese@co.scott.mn.us